

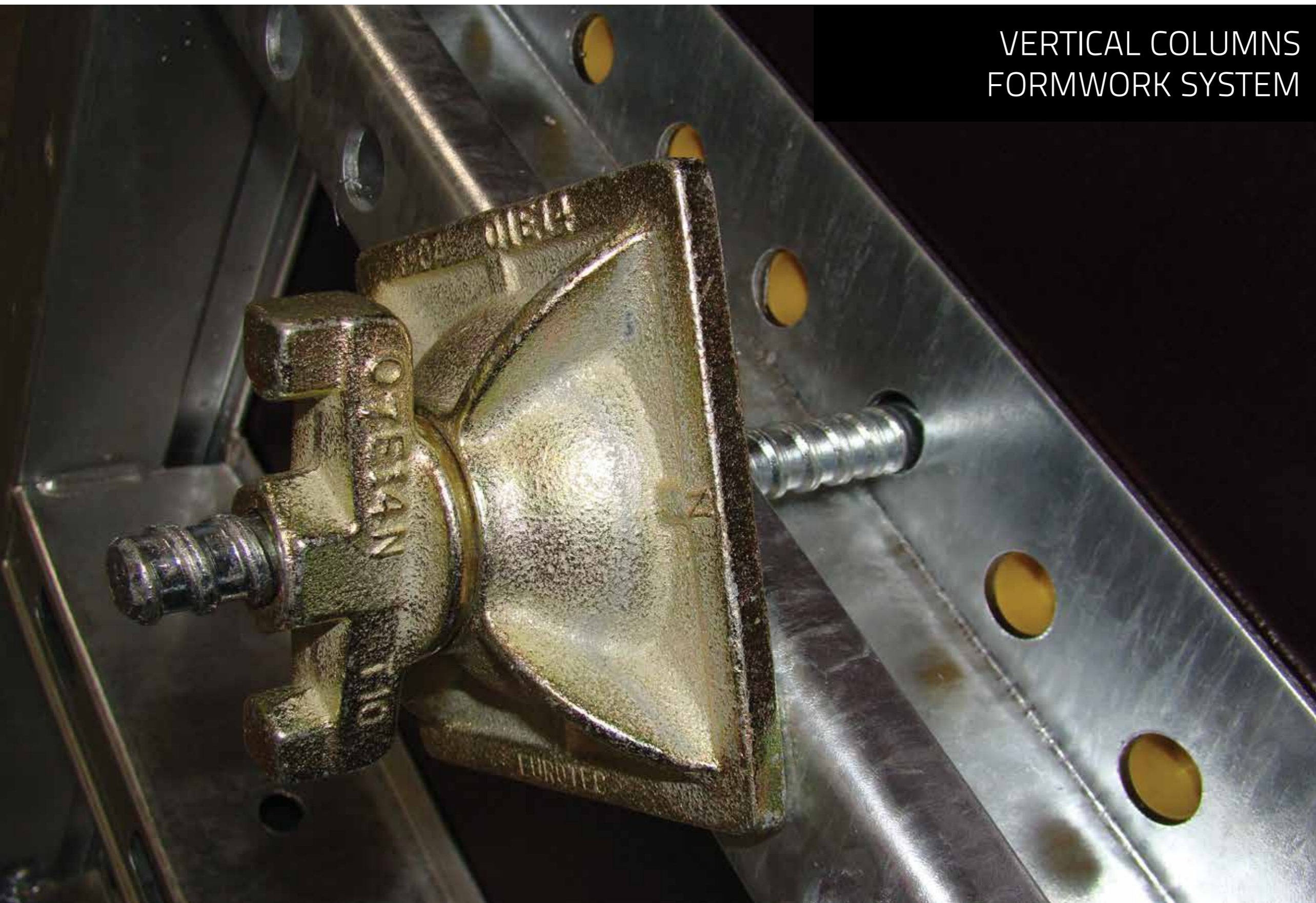


**METALUSA**



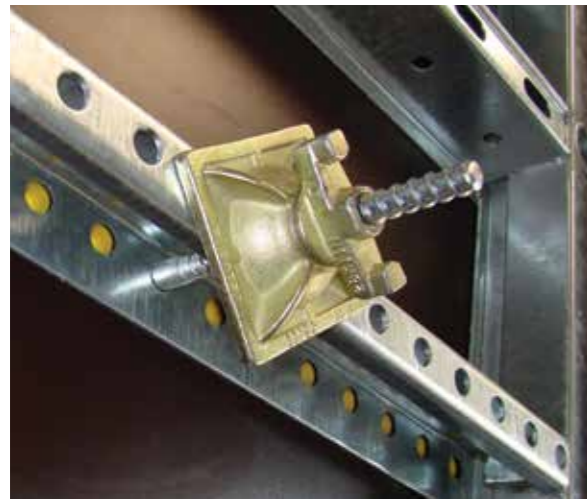
VERTICAL COLUMNS  
FORMWORK SYSTEM

FORTEKO®





# Forteko® Columns Formwork



THE ASSEMBLY OF FORTEKO® FORMWORK IN THE SHAPE OF WINDMILL BLADES **ALLOWS THE FORMATION OF COLUMNS WITH VARIABLE PITCHES EVERY 5 CM UNTIL ATTAINING 120 CM.**

The Forteko® vertical formwork system allows the formworking of pillars and foundations without using any extra components.

The versatile use of Forteko® panels allows the best yield to be gained from formwork.

It allows rapid concreting with fresh concrete load capacity of 90 kN/m<sup>2</sup>. When connecting panels a variable alignment fastening is used to allow compensation joint adjustment.

Forteko® pillar formworking is a system produced with high quality standards and it deploys state-of-the-art technology to ensure great system longevity.

Safety in concreting at a height is ensured by the pre-assembled platform which is transported by crane for placement at the top of the pillar. The formwork surface allows perfect concrete finish quality to be obtained.

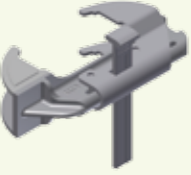





## Forteko® Columns Elements

P020507	VARIABLE PANELS 3,0m - FORTEKO®	Weight (Kg)
P0205070550G	Galv. Forteko® Variable Panel 3,0x0,55m	93,40
P0205070750G	Galv. Forteko® Variable Panel 3,0x0,75m	122,80
P0205070950G	Galv. Forteko® Variable Panel 3,0x0,95m	136,80
P0205071350G	Galv. Forteko® Variable Panel 3,0x1,35m	176,00

P020508	VARIABLE PANELS 1,0m - FORTEKO®	Weight (Kg)
P0205080550G	Galv. Forteko® Variable Panel 1,0x0,55m	35,20
P0205080750G	Galv. Forteko® Variable Panel 1,0x0,75m	45,30
P0205080950G	Galv. Forteko® Variable Panel 1,0x0,95m	55,50
P0205081350G	Galv. Forteko® Variable Panel 1,0x1,35m	70,90

P020515	EXTERIOR CORNERS	Weight (Kg)
P0205151000G	Forteko® galv. exterior corner 1,0m	9,50
P0205153000G	Forteko® galv. exterior corner 3,0m	25,00

	P020520	FASTENINGS - FORTEKO®	Weight (Kg)
	P0205200001G	Alignment fastening Forteko®	5,43
	P0205200003G	700mm long alignment fastening - Forteko®	12,47
	P0205200004G	Strap fastening 1500mm - Forteko®	20,00

		ACCESSORIES	Weight (Kg)
	N560500701500300	Galv. dywidag stay 15/17 for pillars 300mm	0,65
	N560500701500301	Galv. "dywidag" stay 15/17 for gutter 300mm	0,55
	P0402012250G	Stabilising formwork prop 2,25-3,40m	31,50
	P0402012750G	Stabilising formwork prop 2,75-3,90m	46,00
	P0402013750G	Stabilising formwork prop 3,75-4,90m	70,80
	P0402014750G	Stabilising formwork prop 4,75-5,90m	85,00
	I040290090002Z	Prop adapter for Forteko® panels	1,70
	N56M61000F000050	Hex nut 15/17 L=50 mm	0,00
	P0205250850G	Forteko® concreting platform for pillar	132,00

		ACCESSORIES	Weight (Kg)
	P0205263000G	Complete access to pillar concreting platform - 3,0m	45,50
	P0205264000G	Complete access to pillar concreting platform - 4,0m	60,70
	P0205266000G	Complete access to pillar concreting platform - 6,0m	91,00
	P0205269000G	Complete access to pillar concreting platform - 9,0m	136,50
	P0205900009G	Galv. stay for raising of pillar platform	3,00
	P0205900001G	Forteko® galv. lifting hook	5,71
	N56M68120F000120	Revolv. plate nut Adj. 120x120-15mm	1,48
	N32A000250000018	Buffer Ø25x18mm (Yellow) - Forteko® (NOM043)	0,00
	N32A000272500000	PVC tube dia 22/27mm	0,23
	N32A000370000016	Scale type buffer Ø37x24x16mm (Red) FOR034	0,00
	N32A000430000028	Plastic cone dia. 43x22x28mm	0,03



**Metalusa S.A.**  
**Phone** +351 234 529 230  
**Fax** +351 234 529 239  
metalusa@metalusa.pt

[www.metalusa.pt](http://www.metalusa.pt)



UNIÃO EUROPEIA  
Fundo Europeu  
de Desenvolvimento Regional